

NetEnforcer® AC-400 Series

Entry Level Traffic Management Devices

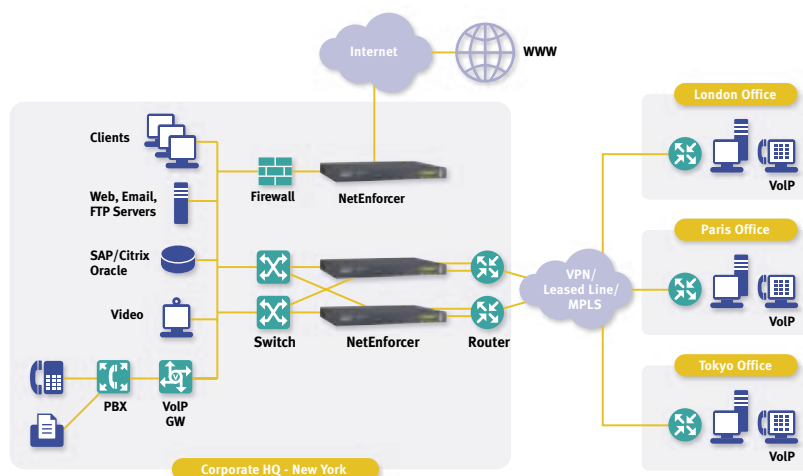
Central Virginia Datacomm
8351 Brook Road
Richmond, VA 23227
www.cv-data.com
804-565-2405
866-473-2281



The NetEnforcer® AC-400 series of entry level traffic management devices is especially suitable for small to medium enterprise networks and broadband service provider networks. Using deep packet inspection (DPI) technology with QoS enforcement capabilities, they monitor and control network traffic and user behavior, optimize traffic flows and provide an unsurpassed level of visibility.

Main Features

- 2 or 4 ports support various network topologies
- Range of operation speeds - 2, 10, 45 and 100 Mbps (full duplex)
- Accurate identification of hundreds of applications and protocols out-of-the-box
- Advanced signatures and behavioral recognition technologies for individual control of different business and entertainment applications
- Supported by NetXplorer centralized management system for streamlined global visibility and control, insightful reporting and analysis, and frontline security
- WAN optimization for maximizing the performance of mission-critical applications through QoS, shaping/prioritization capabilities and highly-flexible policy definitions
- Continuous, easy-to-use traffic monitoring for fast troubleshooting, usage tracking and capacity planning
- Proactive, automatically-triggered early-warning mechanisms providing administrators with alarms concerning network events and the ability to automate corrective actions
- Easy upgrading to higher speeds and increases in number of policies using the same platform
- Detection of traffic anomalies and mitigation of network attacks and security threats by immediate isolation of malicious traffic, without interrupting regular traffic
- Fail-safe performance with external hardware bypass and full redundancy support



Specifications

The NetEnforcer AC-400 series is available in two models serving a range of network configurations and needs.

	AC-402	AC-404
Capacity		
Number of Connections/Flows	96,000 / 192,000	
Throughput	200 Mbps (100 Mbps, Full Duplex)	
Pipes/Virtual Channels	1,024 / 4,096	
Interfaces and Connections		
Management Interface	10 / 100 BaseT	
Network Interfaces (Internal / External)	2 x 10/100 BaseT	2 x 10/100 BaseT 2 x 10/100/1000 BaseT
Console Port	Serial, RJ-45 Connector	
Deep Packet Inspection (DPI) (Typical Examples)		
P2P Protocols	Including BitTorrent, eDonkey, Warez, WinMX, Kazaa	
VoIP Protocols	Including Skype, H.323, SIP, RTP, Net2Phone, Vonage	
Gaming Protocols	Including Doom, Diablo, MSN Game, SWAT, Ultima	
Web/Streaming Application Protocols	Including Abacast, iTunes, RTSP, Winamp MMS	
Business Application Protocols	Including Citrix, SMTP, Oracle, Lotus-Notes, SAP	
Product Options		
Monitoring Only	Yes	Yes
QoS Enforcement Levels	2, 10, 45 and 100 Mbps (Full Duplex)	
Policy Levels (Pipes/VCs)	1,024 / 4,096	
Redundancy	Parallel (1:1)	Parallel and Active (1:1, 1+1)
Add-Ons: NetXplorer Enabler / Reporter	Yes	Yes
NetAccountant	Yes	No
Dimensions		
Size	Standard 1U by 19" rack mount	
Weight	5.50 kg (12.1 lb)	
Bypass Unit	Internal	
Power		
Input (AC/DC)	100 to 240 VAC, 300 W	
Safety and Certifications		
Safety	UL 60950-1/ CSA CS22.2 60950 (ITE) EN 60950-1 ITE	
Emission	EN 55024:1994; A1:2001; A2:2003 Immunity for ITE EN 61000-3-2:2001 Harmonic Emissions EN 61000-3-3:1995; A1:2000 Voltage Fluctuations EN 55022:1998; A1:2000; A2:2003 Emissions for ITE VCCI FCC Part 15, Sub-Part B	

About Allot Communications

Allot Communications is all about broadband traffic management solutions for intelligent networks. Designed for carriers, service providers and enterprises, Allot solutions apply deep packet inspection (DPI) technology to transform broadband pipes into smart networks. This creates the visibility and control vital to manage applications and services, guarantee quality of service (QoS), contain operating costs and maximize revenue. Allot believes in listening to customers, and provides them access to its global network of visionaries, innovators and support engineers.

www.allot.com info@allot.com

- **Americas:** 7664 Golden Triangle Drive, Eden Prairie, MN 55344 USA · Tel: (952) 944-3100 · Toll free: (877) 255-6826 · Fax: (952) 944-3555
- **Europe:** NCI – Les Centres d’Affaires Village d’Entreprises ‘Green Side’ Batiment 7, 400 Avenue Roumanille, BP309, 06906 Sophia Antipolis Cedex, France · Tel: 33 (0) 4-93-001167 · Fax: 33 (0) 4-93-001165
- **Asia Pacific:** 6, Ubi Road 1, Wintech Centre 6-12, Singapore 408726 · Tel: 65 6841-3020 Fax: 65 6747-9173
- **Japan:** Puri-zaido Ochanomizu 301, 4-2-3 Kanda Surugadai, Chiyoda-ku, Tokyo 101-0062 · Tel: 81 (3) 5297-7668 · Fax: 81(3) 5297-7669 · www.allot.jp
- **Israel:** 22 Hanagar Street, Industrial Zone B, Hod-Hasharon, 45240, Israel · Tel: 972 (9) 761-9200 · Fax: 972 (9) 744-3626

