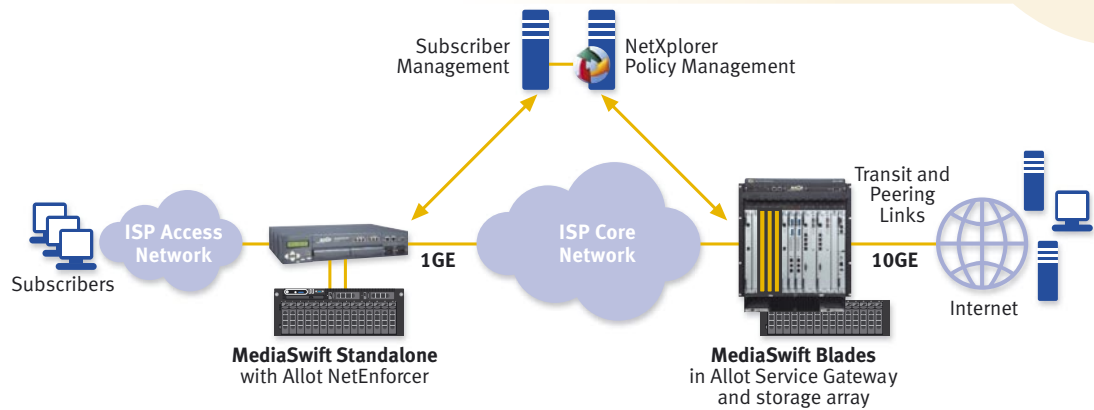




Allot MediaSwift is deployed as a standalone system or as a service blade hosted in Allot Service Gateway



## Specifications

The Allot MediaSwift system components comprise: cache engine(s), storage array(s), and a centralized management server.

Supported Protocols	HTTP video and download services [e.g., YouTube, RapidShare, Dailymotion, etc.] Open P2P: BitTorrent, eDonkey, Gnutella, Ares, FastTrack Commercial P2P: Pando
Scalable "Cluster" Capacity	Up to 16 cache engines per cluster Up to 6 storage arrays per cluster (6TB per storage array; up to 36TB per cluster) Up to 8 million simultaneous sessions per cluster
Cache Configuration Options	Bi-directional upstream and downstream cache Cache-out rate
Availability	M+N redundancy of cache engines Hot-swappable power supplies and storage disk drives Software and hardware watchdogs Hitless in-service software upgrades
DMCA Safe Harbor	Compliant
Management	Integrated with Allot NetXplorer Management GUI SNMP v.2 monitoring Web based reporting and component management CLI-based XML configuration Serial over IP
Security	SSL remote secure access IP-based ACL for CLI and Web management Web manager Access list Two-level CLI authentication
Dimensions (Size)	Cache engine: 1U Storage array: 3U Management server: 1U
Configuration Options	Standalone (single cache engine with attached storage array) Expandable Grid (multiple, interconnected cache engines and storage arrays) Blade (cache engine(s) deployed as blade(s) in Allot Service Gateway Sigma; external storage)
Deployment Options	May be deployed with: Allot NetEnforcer AC-2540 Allot Service Gateway (SG-Omega and SG-Sigma platforms)

## About Allot Communications

Allot Communications (NASDAQ: ALLT) is a leading provider of intelligent IP service optimization solutions for DSL, wireless and mobile broadband carriers, service providers, and enterprises. Allot's rich portfolio of hardware platforms and software applications utilizes deep packet inspection (DPI) technology to transform broadband pipes into smart networks that can rapidly and efficiently deploy value added Internet services. Allot's scalable, carrier-grade solutions provide the visibility, security, application control and subscriber management that are vital to managing Internet service delivery, guaranteeing quality of experience (QoE), containing operating costs, and maximizing revenue in broadband networks.

[www.allot.com](http://www.allot.com) [info@allot.com](mailto:info@allot.com)

- **Americas:** 300 TradeCenter, Suite 4680, Woburn, MA 01801 USA · Tel: (781) 939-9300 · Toll free: 877-255-6826 · Fax: (781) 939-9393
- **Europe:** NCI – Les Centres d'Affaires Village d'Entreprises 'Green Side', 400 Avenue Roumanille, BP309, 06906 Sophia Antipolis Cedex, France · Tel: 33 (0) 4-93-001160 · Fax: 33 (0) 4-93-001165
- **Asia Pacific:** 6, Ubi Road 1, Wintech Centre 6-12, Singapore 408726 · Tel: 65 6841-3020 Fax: 65 6747-9173
- **Japan:** Kanda Surugadai 4-2-3-301, Chiyoda-ku, Tokyo 101-0062 · Tel: 81 (3) 5297-7668 · Fax: 81 (3) 5297-7669 · [www.allot.co.jp](http://www.allot.co.jp)
- **Middle East and Africa:** 22 Hanagar Street, Industrial Zone B, Hod-Hasharon, 45240, Israel · Tel: 972 (9) 761-9200 · Fax: 972 (9) 744-3626