

# ServiceProtector

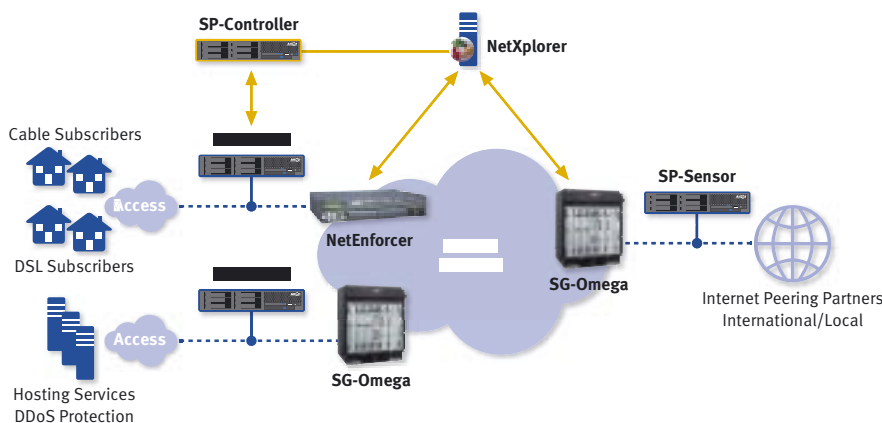
Network Service Protection System



Allot ServiceProtector ensures service continuity and guards network integrity against known and unknown threats. Through immediate identification of Denial of Service (DoS/DDoS) attacks, Zero Day attacks, worms, zombie and spambot behavior, ServiceProtector enables fast, surgical mitigation by blocking, limiting or isolating offending traffic while allowing legitimate traffic to flow.

## Feature Highlights

- Scalable, carrier-grade performance compatible with 1GE and 10GE networks
- Synergistic behavioral detection technologies provide complete visibility of network service threats
  - › Network Behavior Anomaly Detection (NBAD) identifies within seconds, DoS/DDoS, Zero Day attacks and other traffic anomalies impacting network performance
  - › Host Behavior Anomaly Detection (HBAD) identifies subscriber zombie/ bot behavior (outgoing SPAM, DoS, worm propagation, port scanning) and is used to isolate, limit or block these subscribers before their activity impacts network services
- Automatic capture of anomalous packets for signature generation and forensic analysis
- Deep Packet Signatures created in real-time and within seconds, even for Zero Day attacks, reducing vulnerability and risk
- Signatures applied to Allot NetEnforcer devices and Service Gateway platform enable fast mitigation of attacks and isolation of zombies
- Supports automated or operator-initiated mitigation
- Signatures can be applied to routers, firewalls, IPS, traffic shapers and traffic scrubbers to leverage existing investments
- Transparent network deployment via network taps or port SPAN ensures no latency and no points of failure
- Centralized configuration, management,



ServiceProtector Sensors, NetEnforcer, and Service Gateway platforms deployed at key points within the network (access links, peering links, mission-critical subnets) provide a powerful attack detection and mitigation solution



# Specifications

The ServiceProtector system comprises ServiceProtector Sensor devices and a centralized ServiceProtector Controller, compatible with Allot NetEnforcer devices and/or Allot Service Gateway platforms

## ServiceProtector System

<b>Detection Method</b>	Behavioral Detection Technology	Network Behavior Anomaly Detection (NBAD) Host Behavior Anomaly Detection (HBAD) Predefined signatures not required for detection of DoS/DDoS, worms, SPAM activity
<b>NBAD</b>	Anomaly Detection Categories	All varieties of TCP/IP traffic, including TCP-based (with subcategories), UDP, ICMP (with subcategories), fragmented packets, and all non-defined types. This ensures complete coverage of all varieties of known and unknown network-level attacks such as DoS/DDoS and Zero Day worm attacks.
	Anomaly Detection Speed	Typically 5-30 seconds
	Signature Extraction Speed	Typically 10-20 seconds
	Packet Signatures	Encompasses entire range of packet information from Layer 2 to Layer 7, including TCP/IP headers, full payload, MAC addresses, VLAN tags and MPLS labels
	Real-time Signatures	Signatures are created in real-time without using a predefined database
<b>HBAD</b>	Anomaly Detection Categories	Internal hosts that generate outgoing: SPAM, DoS attacks, worm and hacker probing
	Anomaly Detection Speed	Typically 3-5 minutes
<b>Traffic Data</b>	Collection Method	Fiber-optic tap or port/mirror SPAN
	Traffic Meta-Data (for behavioral modeling and anomaly detection)	Extracted by parsing directly from every packet
	Packet Capture	Automated (NBAD) and ad hoc from GUI
<b>System Outputs</b>	Filter Formats	Allot NetXplorer, SNORT, Cisco ACL, Cisco PIX, Fortinet, TCPDUMP
	Alerting/Notification	Email, SNMP trap, syslog
	Customizable Event Notification	Rich set of user-configurable parameters
	Mitigation	Via Allot NetEnforcer devices and Allot NetXplorer management system, Redback BRAS
<b>Allot Product Compatibility</b>	NetXplorer Centralized Management Server	MS Windows and Linux platforms
	NetEnforcer	AC-1000 and AC-2500 models
	Service Gateway	SG-Omega Series and future platforms. SP-Sensor deployed as a blade in the Service Gateway chassis.

## ServiceProtector Sensor

<b>Interface Types</b>	Monitoring Interfaces	4 x 10/100/1000BASE-T ports 4 x 1 Gigabit Ethernet (1000BASE-SX/LX) ports 2 x 10 Gigabit Ethernet (10GBASE-SR/LR) ports
	Management Interface	10/100/1000BASE-T, dedicated management interface
<b>Throughput</b>	On 4 x 10/100/1000BASE-T ports or on 1000BASE-SX/LX ports	4 Gbps (1 Gbps per port), handles 2 full duplex GE fiber links
	On 2 x 10 GBASE-SR/LR ports	10 Gbps (5 Gbps per port), handles 1 full duplex 10GE link
	Connection Rates	5.5 million concurrent connections; 98,000 connections per second
	Traffic Groups	30 groups per Sensor
<b>Dimensions</b>	Size	Standard 2U by 19" rack mount, IBM x3650 server

## ServiceProtector Controller

<b>Interface Types</b>	Management Interface	10/100/1000BASE-T, dedicated management interface
<b>Capacity</b>	Max Sensors per Controller	16
	Traffic Groups	400 sensor-groups per Controller
<b>Dimensions</b>	Size	Standard 2U by 19" rack mount, IBM x3650 server

## About Allot Communications

Allot Communications (NASDAQ: ALLT) is a leading provider of intelligent IP service optimization solutions for DSL, wireless and mobile broadband carriers, service providers, and enterprises. Allot's rich portfolio of hardware platforms and software applications utilizes deep packet inspection (DPI) technology to transform broadband pipes into smart networks that can rapidly and efficiently deploy value added Internet services. Allot's scalable, carrier-grade solutions provide the visibility, security, application control and subscriber management that are vital to managing Internet service delivery, guaranteeing quality of experience (QoE), containing operating costs, and maximizing revenue in broadband networks.

[www.allot.com](http://www.allot.com) [info@allot.com](mailto:info@allot.com)

- **Americas:** 7664 Golden Triangle Drive, Eden Prairie, MN 55344 USA · Tel: (952) 944-3100 · Toll free: (877) 255-6826 · Fax: (952) 944-3555
- **Europe:** NCI – Les Centres d’Affaires Village d’Entreprises ‘Green Side’, 400 Avenue Roumanille, BP309, 06906 Sophia Antipolis Cedex, France · Tel: 33 (0) 4-93-001167 · Fax: 33 (0) 4-93-001165
- **Asia Pacific:** 6, Ubi Road 1, Wintech Centre 6-12, Singapore 408726 · Tel: 65 6841-3020 Fax: 65 6747-9173
- **Japan:** Puri-zaido Ochanomizu 301, 4-2-3 Kanda Surugadai, Chiyoda-ku, Tokyo 101-0062 · Tel: 81 (3) 5297-7668 · Fax: 81(3) 5297-7669 · [www.allot.jp](http://www.allot.jp)
- **Middle East and Africa:** 22 Hanagar Street, Industrial Zone B, Hod-Hasharon, 45240, Israel · Tel: 972 (9) 761-9200 · Fax: 972 (9) 744-3626

